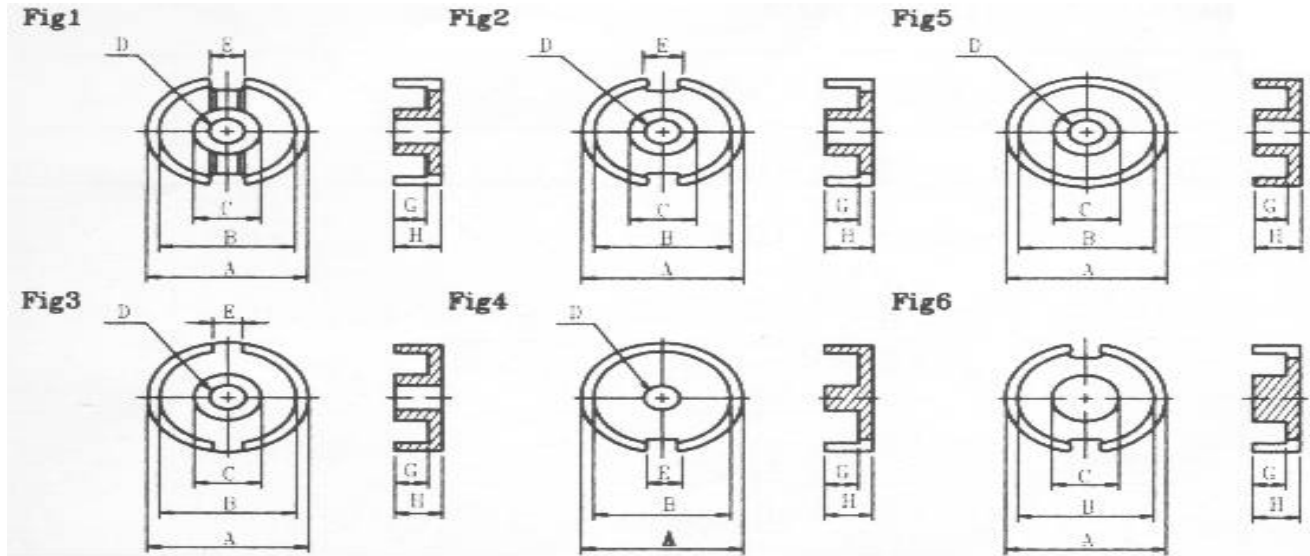


# POT CORE FERRITES

SHAPES AND DIMENSIONS (UNIT:mm)



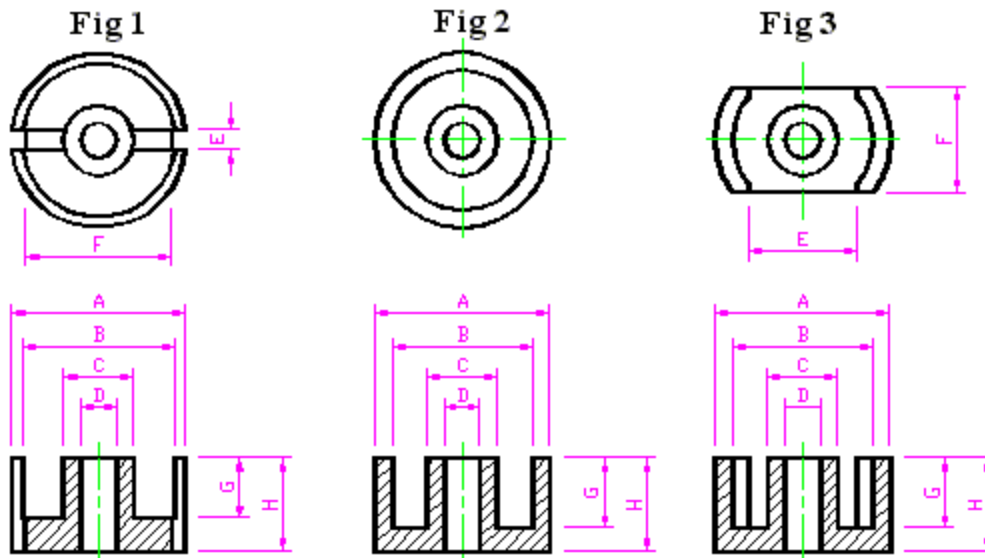
## DI MENS IONS OF MAI N PRODUCTI ONS

ITEM	A	B	C	D	E	F	2G	2H
P14X8 <sup>F1</sup>	14±0.3	11.6 <sup>+0.5</sup> <sub>-0</sub>	6 <sup>+0</sup> <sub>-0.3</sub>	3.1±0.15	3±0.2	8.3±0.25	5.6 <sup>+0.6</sup> <sub>-0</sub>	8.5 <sup>+0</sup> <sub>-0.4</sub>
P18X11 <sup>F1</sup>	18±0.4	14.9 <sup>+0.6</sup> <sub>-0</sub>	7.6 <sup>+0</sup> <sub>-0.5</sub>	3 <sup>+0.2</sup> <sub>-0</sub>	3.0-0	11.5 <sup>+0</sup> <sub>-1.0</sub>	7.3 <sup>+0.6</sup> <sub>-0</sub>	10.7 <sup>+0</sup> <sub>-0.4</sub>
P18X14 <sup>F1</sup>	18±0.4	14.9 <sup>+0.6</sup> <sub>-0</sub>	7.6 <sup>+0</sup> <sub>-0.5</sub>	3 <sup>+0.2</sup> <sub>-0</sub>	3.0-0	11.5 <sup>+0</sup> <sub>-1.0</sub>	10.1 <sup>+0.6</sup> <sub>-0</sub>	14 <sup>+0</sup> <sub>-0.4</sub>
P22X13 <sup>F1</sup>	21.6±0.4	17.9 <sup>+0.7</sup> <sub>-0</sub>	9.4 <sup>+0</sup> <sub>-0.4</sub>	4.4 <sup>+0.3</sup> <sub>-0</sub>	3.0-0	14.5 <sup>+0</sup> <sub>-1.0</sub>	9.2 <sup>+0.6</sup> <sub>-0</sub>	13.6 <sup>+0</sup> <sub>-0.4</sub>
P26X16 <sup>F1</sup>	25.5±0.5	21.6±0.4	11.3±0.2	5.6 <sup>+0.1</sup> <sub>-0.2</sub>	4.3±0.25	18±0.4	11.3±0.3	16.1±0.2
P30X19 <sup>F1</sup>	30±0.5	25.4±0.4	13.3±0.2	5.56±0.1	3.9-0	22.2±0.4	13.2±0.3	18.8±0.2
P11X6.5 <sup>F2</sup>	11.1±0.3	9.3±0.3	4.7 <sup>+0</sup> <sub>-0.2</sub>	2±0.15	2.2±0.2	7±0.25	4.7±0.2	6.5±0.2
P9.4X9.6 <sup>F2</sup>	9.4 <sup>+0</sup> <sub>-0.4</sub>	7.5 <sup>+0.35</sup> <sub>-0</sub>	3.9 <sup>+0</sup> <sub>-0.2</sub>	2 <sup>+0.1</sup> <sub>-0</sub>	2±0.2	6.5±0.3	7.1 <sup>+0.6</sup> <sub>-0</sub>	9.6 <sup>+0</sup> <sub>-0.8</sub>
P11X7 <sup>F3</sup>	11.1±0.3	9.2±0.3	4.7 <sup>+0</sup> <sub>-0.2</sub>	2±0.15	2±0.2		4.4±0.2	6.6±0.2
P19X6 <sup>F3</sup>	19±0.4	14.8 <sup>+0.6</sup> <sub>-0</sub>	12 <sup>+0</sup> <sub>-0.5</sub>	7±0.15	2±0.1		3 <sup>+0.2</sup> <sub>-0</sub>	6±0.2
P25X6 <sup>F3</sup>	25±0.5	21±0.4	17±0.4	12±0.2	2±0.1		3.6 <sup>+0.2</sup> <sub>-0.4</sub>	6±0.2
P2.3X3 <sup>F4</sup>	2.35 <sup>MAX</sup>	1.6±0.1		0.85±0.1	0.6±0.1		2.4 <sup>+0.2</sup> <sub>-0</sub>	3±0.15
P5.5X7.2 <sup>F4</sup>	5.5±0.1	4.2 <sup>+0.2</sup> <sub>-0</sub>		2.5 <sup>+0</sup> <sub>-0.3</sub>	1.4±0.2		5.6 <sup>+0.5</sup> <sub>-0</sub>	7.2 <sup>+0</sup> <sub>-0.5</sub>
P6.9X6.76 <sup>F4</sup>	6.9±0.3	5.1±0.3		2.03±0.15	1.8±0.2		5.2±0.4	6.76±0.4
P23X18 <sup>F</sup>	22.8±0.5	18.3±0.35	9.7±0.25	5.1±0.1			13.8 <sup>+0.6</sup> <sub>-0</sub>	17.8±0.4
P9.4X6 <sup>F6</sup>	9.4 <sup>+0</sup> <sub>-0.4</sub>	7.5 <sup>+0.35</sup> <sub>-0</sub>	3.9 <sup>+0</sup> <sub>-0.2</sub>		2±0.2	6.5±0.3	4 <sup>+0.2</sup> <sub>-0</sub>	6 <sup>+0</sup> <sub>-0.4</sub>

## POT CORE FERRITES

ITEM	ALnH± 25%							
	JP40	J2M	J2	J3	J4	J5	J6	J7
P14X8 (F1)	2250		2500	3200				
P18X11 (F1)	3000		3500	4300	5000	6000		
P18X14 (F1)			3100					
P22X13 (F1)	4000		4700					
P26X16 (F1)	5000	5000	5600	6100	9000			
P30X19 (F1)	6000	6000	7200	9200				
P11X7 (F3)			1900					

### PC SHAPES AND DIMENSIONS (UNIT: mm)

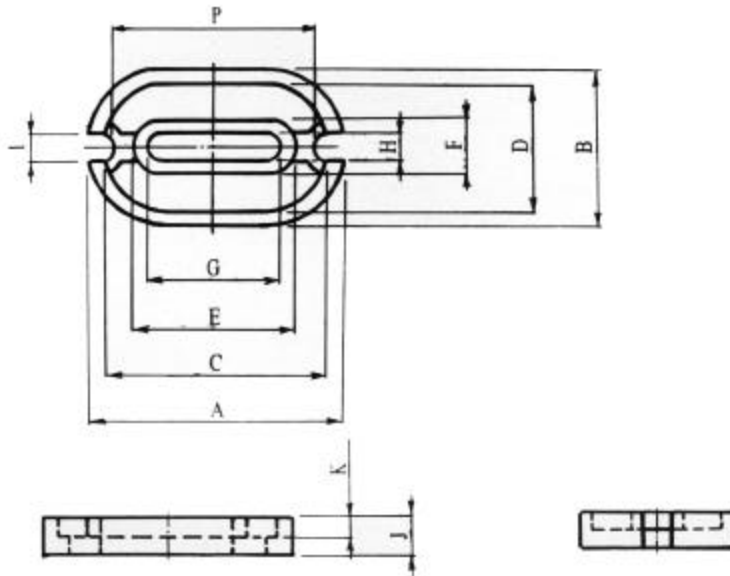


### DIMENSIONS OF MAIN PRODUCTIONS

ITEM	A	B	C	D	E	F	G	H	I	J	FIG
PC18/12X11	18±0.4	14.9 <sup>+0.6</sup> <sub>-0</sub>	7.6 <sup>+0</sup> <sub>-0.5</sub>	3 <sup>+0.2</sup> <sub>-0</sub>	3.0-0	11.5 <sup>+0</sup> <sub>-1.0</sub>	3.65 <sup>+0.3</sup> <sub>-0</sub>	5.35 <sup>+0</sup> <sub>-0.2</sub>	10.49 MIN	11.91±0.23	1.3
PC23/15X11	22.8±0.5	18.3±0.35	9.7±0.25	5.1±0.1			3.75±0.1	5.5±0.1	13.2 MIN	15.2±0.3	2.3
PC23/15X18	22.8±0.5	18.3±0.35	9.7±0.25	5.1±0.1			6.9±0.3	8.9±0.2	13.2 MIN	15.2±0.3	2.3
PC30/20X19	30±0.5	25.4±0.4	13.3±0.2	5.56±0.1	3.9-0	22.2±0.4	6.58±0.1	9.35±0.1	15.5 MIN	20.3±0.3	1.3

# POT CORE FERRITES

## OP Shapes and Dimensions



## Dimensions of Main Productions

ITEM	A	B	C	D	E	F	G	H	I	J	K	P
OP38	38±1	22.4±0.6	36±0.9	18.4±0.6	23.6±0.6	8±0.3	19.6±0.6	4±0.3	4±0.3	6±0.3	3.5±0.3	30