

Drum Core (DRH) for High Current

Fig 1

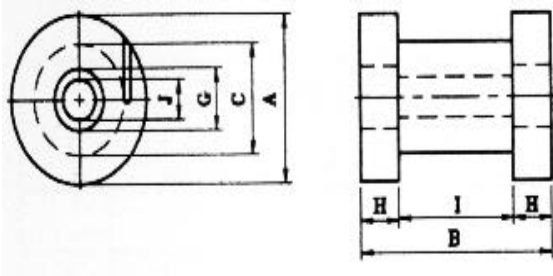


Fig 2

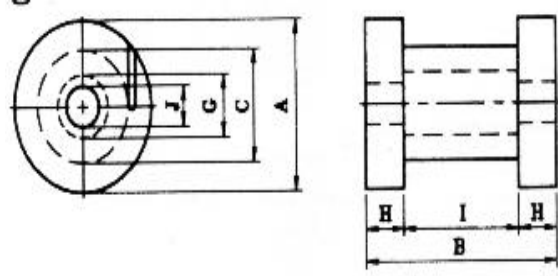


Fig 3

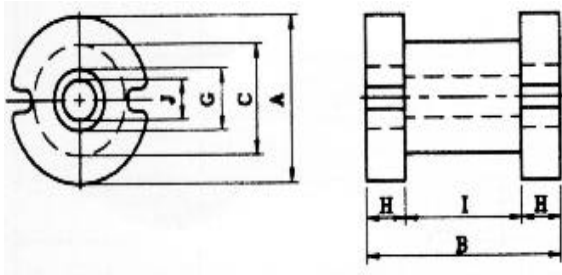
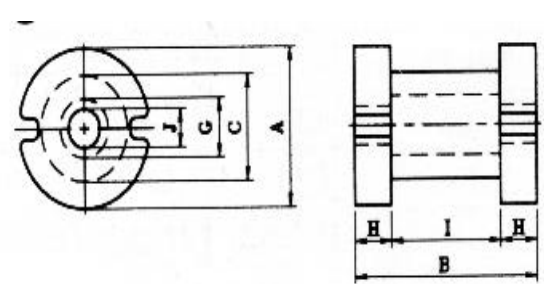


Fig 4



ITEM	A (mm)	B (mm)	C (mm)	G (mm)	H	I (mm)	J (mm)	FIG
DRH 14x20 ^f	13.97 ± 0.38	20 ± 1.0	8.95 ± 0.25	4.5 ± 0.4	3.76	12.5 ± 0.38	3.2 ± 0.2	3
DRH 16.2x17.5	16.2 ± 0.5	17.45 ± 1	10.9 ± 0.5	4.65 ± 0.3	2.4	12.65 ± 0.5	3.15 ± 0.2	3
DRH 18x20	18 ± 0.8	20 ± 1	11 ± 0.4	4.75 ± 0.3	3.75	12.5 ± 0.5	3.2 ± 0.2	3
DRH 22x14.5	22 ± 1	14.5 ± 1	12.5 ± 0.3	6.8 ± 0.3	3.5	7.5 ± 0.5	3.75 ± 0.2	1
DRH 22x18	22 ± 1	18.5 ± 1	12.5 ± 0.3	6.8 ± 0.3	3.5	11.5 ± 0.5	3.75 ± 0.2	1
DRH 28x22	28 ± 1	22 ± 1.5	17 ± 0.4	6 ± 0.3	4	14 ± 0.6	4.2 + 0.6 - 0	1
DRH 28x25	28 ± 1	25 ± 1.5	17 ± 0.4	6 ± 0.3	4	17 ± 0.6	4.2 ± 0.6 0	1
DRH 35x25	35 ± 1	25 ± 1.5	21 + 0.3 - 0.6	4.83 + 0.2 - 0.3	4	17 ± 0.6	6.99 + 0.3 - 0.5	2
DRH 35x35	35 ± 1	35 ± 1.5	31 + 0.3 - 0.6	4.83 + 0.2 - 0.3	4	27 ± 0.8	6.99 + 0.3 - 0.5	2

Popular material J2M.

Can be supplied with unassembled parts or assembled with epoxy coating.